

UNITED IS THE WAY



Give. Advocate. Volunteer.

There's a way for everyone to make an impact – find yours and help create a thriving Central Texas for all.

unitedwayaustin.org/get-involved

unitedwayaustin.org
[@unitedwayATX](https://twitter.com/unitedwayATX)



IMPACT REPORT

July 2024-June 2025



OUR MISSION

We bring our community together to break economic barriers and build opportunity for all.

OUR VISION

A Central Texas where everyone has the opportunity to thrive.



Message from

CEO Ingrid Taylor

Dear friends,

Belonging is the foundation for a thriving community. When families are economically stable, have reliable access to resources they need to be healthy and well, and feel connected to their communities, they can reach their full potential. That's what United Way for Greater Austin works for every day. Last year, with you, we made incredible strides toward that vision.

In my first year as CEO of United Way for Greater Austin, I am honored to lead this important work alongside such a passionate and committed community. Thanks to your partnership, 2024-2025 was a year of milestone progress that will shape our region for years to come.

Here are just a few highlights from the year we built together:

- **Strengthening early child care:** Collective advocacy led to passage of an initiative that will bring in \$75 million annually for early care and education, supporting 10,000 children in Travis County.
- **Investing in community health and stability:** We distributed more than \$6 million in community investment grants and subgrants to medical clinics, early learning centers, community health centers, food banks, and more, helping connect neighbors to vital resources.
- **Answering the call for help:** Through our 2-1-1 helpline and ConnectATX database, we answered more than 1,000 requests daily for resources like food, health care, and housing.
- **Innovating for the future:** We're experimenting with new ways to make it easier for families to get the health and social services they need from providers across the region.
- **Supporting parents and children:** Led by United Way, our economic advancement partners served 133,071 clients, 15,923 families, and 11,999 children with resources to improve stability for the whole family.
- **Reflecting our vibrant community:** We refreshed our look to better capture the energy of the people we serve and the vision we share.

In the pages ahead, you'll find stories of growth, resilience, and connection. None of this happens without you: our donors, partners, volunteers, and advocates who show up, believe in this work, and help build a Central Texas where everyone thrives.

United is the way forward.

With gratitude,



BOARD OF DIRECTORS

Kristin Marcum,
Board Chair, ECPR
Texas

Amanda Luther,
Boston Consulting
Group

Jennifer Poppe,
Board Treasurer,
Vinson & Elkins

Danielle McNeely,
Ernst & Young LLP

Blake Absher,
Broadway Bank /
Truist

Abbi Miller,
St. David's
HealthCare

Dr. Anjum Khurshid,
Harvard Medical
School

Karen Steakley,
Tesla

Jeremiah Bentley,
Texas Mutual
Insurance Company

**Monica Muñoz
Andry,** Greater Austin
Hispanic Chamber of
Commerce

Joshua Childs,
University of Texas

Dave Porter,
Williamson
County Economic
Development
Partnership

**John David Holmes
Jr.,** Forcepoint

Heidi Post, H-E-B

Mollie Duckworth,
Latham & Watkins

Malini Rajput,
Capital One Bank

Allison Dwyer,
Community Advocate

**The Honorable Rudy
Metayer,** City of
Pflugerville, Graves
Dougherty Hearon
& Moody

Andrew Esparza,
Retired Human
Resources Executive

Jennifer Foster,
Dell Technologies

Yvette Ruiz,
JPMorgan Chase

Jay Fox, Baylor Scott
& White Health

**Dr. Russell
Lowery-Hart,** Austin
Community College
District

Ryan Frederick, Here

Michele Glaze,
Samsung Austin
Semiconductor

Scott Rust, National
Instruments

Jehmu Greene,
Barbara's Legacy,
We Defend Truth

**Dr. Sarojani
Mohammed,**
Ed Research Works

Cristina Guajardo,
Guadalupe
Neighborhood
Development
Corporation

Mark Strama,
The University of
Texas at Austin

Laura Huffman, Civic
Solutions Partnership

Ingrid Taylor,
United Way for
Greater Austin

Michele J. Scott,
Square Move Realty

Charles Thornburgh,
Civitas Learning

Bobby Jenkins, ABC
Home & Commercial
Services

Alison Walgren,
Deloitte

Ed Latson,
Opportunity Austin

Curtis Williams,
Jacobs

Jennifer Wu,
Kirkland & Ellis

Investing Early. Growing Access.

A strong foundation begins early. We focus on supporting families and caregivers with the tools, resources, and support they need to help children grow, learn, and thrive before school starts.

THE BIG PICTURE

A look at what we accomplished together this year:



Early education win:

A United Way-championed bill in the 89th Texas Legislature centralized pre-K funding, expanding access for more centers, teachers, and families.

18,000+

young children from low-income households gained access to high-quality early learning.

2,047

pregnant and postpartum mothers connected to life-changing supports

87%

of coalition members across Success By 6 in Austin/Travis and Williamson counties find value in the coalition's work.

70+

child care centers, 500+ educators, and 5,000+ children benefitted from Pre-K Partnerships and Shared Services Alliance support.

\$75M

annually invested in early childhood with the passing of Proposition A in Travis County.

WHY IT MATTERS

1 in 4

local children under 6 live in households with low income.*

3 in 5

children from families with low income in our community are not school-ready when they enter Kindergarten.**



We bring together early childhood centers, educators, parents, caregivers, community advocates, and civic leaders to tackle our region's toughest early care and education challenges. And we're seeing results.

Rooted in a Dream, Growing With Support.

United Way is strengthening early child care and education across Central Texas



Maria Dominguez, founder of Cielito Lindo, builds strong foundations through language-rich, high-quality early learning.

MARIA DOMINGUEZ KNEW SHE WANTED TO BE A TEACHER SINCE SHE WAS 9. SITTING OUTSIDE HER APARTMENT WITH AN EASEL AND FOLDING TABLE, SHE HELPED NEIGHBORHOOD KIDS WITH THEIR HOMEWORK, HER FIRST MAKE-SHIFT CLASSROOM. >

That spark grew each year. Maria earned her degree in bilingual education, taught pre-K and first grade, and became a school counselor. When her daughter was born, a new dream took root: creating a safe, nurturing early learning environment so more children could access the same high-quality care she wanted for her daughter.

The seed for Cielito Lindo, her Spanish immersion preschool, was planted.

Living Room to Lifelong Learning

Maria opened Cielito Lindo out of her living room. Five years later, the center has grown to three Austin locations. Two schools have received the

highest quality rating in Texas, with the third on the way. Today, 95 children are enrolled in Cielito Lindo schools, learning in language-rich environments with small class sizes and nurturing teachers.

Obstacles Face Families and Providers

Building a small business has brought hurdles. Maria navigated complex city permits, licensing, and leasing requirements while striving to reach more families. Families across Greater Austin face their own barriers to accessing care: 6,171 children under age 6 are on the waitlist for high-quality subsidized child care.

Partnering for a Stronger Early Childhood System

That's where United Way steps in.

Maria joined United Way's Pre-K Partnerships and Shared Services Alliance, gaining access to professional development, marketing support, and sustainable public child care funding. She also became a member of the Success By 6 coalition, led by United Way, which unites more than 750 partners across the region to strengthen early child care and education.

"The administrative requirements of owning a small business were all new to us," Maria said. "United Way's programs are walking beside us

to get it all done. It's amazing."

Advocacy, Resources, and Real Impact

An early childhood force in our community for more than 20 years, United Way understands the barriers families and providers face. By convening the professionals and families at the heart of our early childhood sector, we're co-building creative solutions through resource connection.

"Even \$100 to develop teacher badges makes a huge difference," Maria said.

Beyond materials, we're strengthening the foundation of early care through advocacy. Our efforts contributed to a

\$75 million increase in local funding for early care in last year's tax-rate election, supporting 10,000 children and improving wages for child care workers. Other United Way-backed legislation helped reduce permit restrictions for new centers and advocated for policy to centralize support for preschools, allowing more centers, school districts, teachers, and children to benefit.

Focus on What Matters Most: The Children

With this kind of support, Cielito Lindo can offer scholarships for children from low-income families, military families, and Spanish-speaking households.

Her team focuses on what matters most: helping children thrive in joyful, high-quality environments, with singalongs, self-care spa days, and community visitors who inspire big dreams.

Building Early Education, One Family at a Time

With children and educators at the center of the solution, United Way supports providers like Maria by growing the capacity and quality of early education, one center, one family at a time.

Support. Stability. Success.

Responding to local needs. Transforming how our region delivers care, connection, and opportunity – because every individual deserves the opportunity to prosper.

KEY POINTS

1,500

In the last six months, 1,500 clients received **enhanced navigation support** to move from urgent needs to long-term stability.

8,400 lbs

of **fresh produce** delivered weekly through partnership with The Common Market

2-1-1 + ConnectATX

When facing a crisis, individuals and families need immediate access to reliable services and resources to meet their needs.

211 and ConnectATX are lifelines ready to meet our community's challenges. Through these networks, we offer immediate guidance and support, ensuring our neighbors are never alone in their hour of need.

211

A critical helpline for community members that connects them to trained specialists offering help with food, health care, utilities, housing, mental health, child care, and more.

ConnectATX

A first-of-its kind referral database that closes the loop and connects neighbors to long-term support tools.

1,000+

Requests for help answered daily

WHY IT MATTERS

1 in 4

households in Greater Austin are considered low income*

1 in 11

adults report poor physical health**

1 in 6

local families worry about their ability to meet their basic needs including food***

TOP NEEDS OF 2024

31,579

FOOD

27,623

HOSING AND SHELTER

22,868

HEALTH CARE

13,369

UTILITIES

4,552

MENTAL HEALTH AND SUBSTANCE USE

A Sibling's Support

How United Way's benefits assistance provided relief and renewed independence

JIMMY, 83, HAD BEEN THROUGH MORE THAN MOST. LIVING ON HIS OWN, HIS APARTMENT WAS BROKEN INTO MULTIPLE TIMES. HE ENDURED TWO LIFE-THREATENING ILLNESSES. ON TOP OF IT ALL, HIS SOCIAL SECURITY INCOME WAS LOW, MAKING GETTING BY A STRUGGLE. >



"Knowing there is help out there takes a financial burden off you and your loved ones," Marcela said.

A Sister Who Wouldn't Give Up

Marcela, Jimmy's younger sister, was his primary caretaker. She had cared for him during his darkest days, including dialysis and a kidney transplant. The treatment exceeded expectations - Jimmy's kidney has lasted for 20 years.

Then another health scare came without warning.

One day, Marcela arrived to take Jimmy to a doctor's appointment. He didn't answer right away, and when he finally opened the door, she could tell something was wrong. He looked pale, withdrawn, and confused. She took him to his doctor, where his vitals were dangerously low. He needed emergency care immediately.

Jimmy hesitated. The cost of an ambulance ride was out of reach for him. Marcela, understanding the financial barrier, drove him herself. Doctors diagnosed him with pneumonia, which could worsen quickly without intervention. One month later, Jimmy developed sepsis, a life-threatening blood infection. Again, Marcela acted fast, ensuring he received treatment to prevent a stroke and other complications.

Connecting to United Way's Network of Help

As Jimmy recovered, medical bills from his recent treatments piled up. His limited Social Security income couldn't cover the basics, let alone the added expenses. His fixed income was stretched thinner than ever.

Marcela, determined to help her brother, called 2-1-1, United Way's free 24/7 helpline connecting neighbors to essential resources like income support, food, health care, housing, and transportation.

She was connected with Amber, a 2-1-1 Navigation Specialist. Amber listened with compassion to Jimmy's story. She suggested Marcela apply for the Medicare Savings Plan on Jimmy's behalf. The Medicare Savings Plan removes copays and deductibles for clients, saving between \$185-\$630 each month. For Jimmy, that meant more money for food, hygiene products, and day-to-day necessities.

Step-by-Step Guidance Through the Process

Marcela had never heard of the program before. Amber let her know the application process could take months. She followed up with Marcela every step of the way, ensuring documents were submitted, offering emotional support, and providing other resources in the meantime.

Good news arrived: Jimmy was approved for the Medicare Savings Plan, keeping more money in his account each month for basic needs.

"Financially, this has taken a burden off of me," Marcela said. "Knowing there is help out there takes a big weight off you and your loved ones."

United Way answers nearly 400,000 requests for help like this every year. Many of those requests involve benefits our neighbors qualify for, but the long forms, detailed requirements, and extended wait times make them difficult to access.

Recovery and New Independence

With his sister's care and the additional benefits, Jimmy is recovering one day at a time.

"He's made big strides," Marcela said. "Thriving, striving, doing it all."

Today, Jimmy is on the mend. He's walking without a walker. He's shopping for himself again for the first time in eight months. Day by day, he's reclaiming his independence.

Part of a Bigger Story

Every day, United Way's 2-1-1 Navigation Specialists answer hundreds of calls like Marcela's, providing the resources, guidance, and hope that help Central Texans overcome barriers and build stability.

Powering Potential. Fueling Futures.

Family stability starts with investing in parents. By helping them access education, careers, and child care, we're opening doors for the whole family now and for generations to come.

Parenting Students Project

In 2025, we wrapped up the Parenting Students Project. This four-year program, in partnership with Austin Community College, provided parenting students with the supports they needed to accelerate their postsecondary education. A \$500 monthly stipend, access to high-quality child care, academic counseling and more brought results: 88% of students who participated in the program either graduated or stayed in school through spring 2024 compared to 54% of parenting students who did not participate in the program.

“I’m trying to finish this college experience for myself and my kids. I want to be able to tell them I got the degree I dreamed of having.”

-Program Participant



When Partners Align, Students and Families Thrive

“Our students are parents, workers, and caretakers. They show incredible resilience, balancing school with the demands of everyday life. They shouldn’t have to do it alone,” says ACC Chancellor Dr. Russell Lowery-Hart. “Our partnership with United Way strengthens our ability to connect students with resources and remove barriers. Together, we are building a community where every student feels seen, valued, and supported.”

Where the United Way-led 2-Gen Coalition for Economic Advancement steps in

Our two-generation approach provides strategic support to programs that invest in parents and their children at the same time, ensuring they remain connected, well-informed, and positioned for growth throughout the region in order to better serve and empower families.

Our 2-Gen Coalition brings together 62 active organizations who focus on whole-family supports that help get parents and their children on a path to prosperity.

Last year, 2-Gen Coalition partners served a total of

133,071
clients

15,923
families

11,999
children with resources to advance family stability.

WHY IT MATTERS

56%
of households struggling to make ends meet are working full-time*

Despite the increased need for an educated, skilled workforce, many lack access to the resources and opportunities necessary for college and career readiness.

1 in 3
households are struggling to make ends meet*

*United for ALICE, 2025

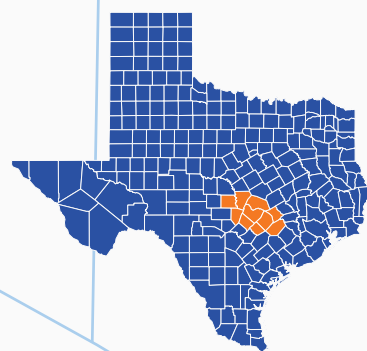


**BEHAVIORAL HEALTH CARE
COORDINATION**

📍 30+ Texas Counties

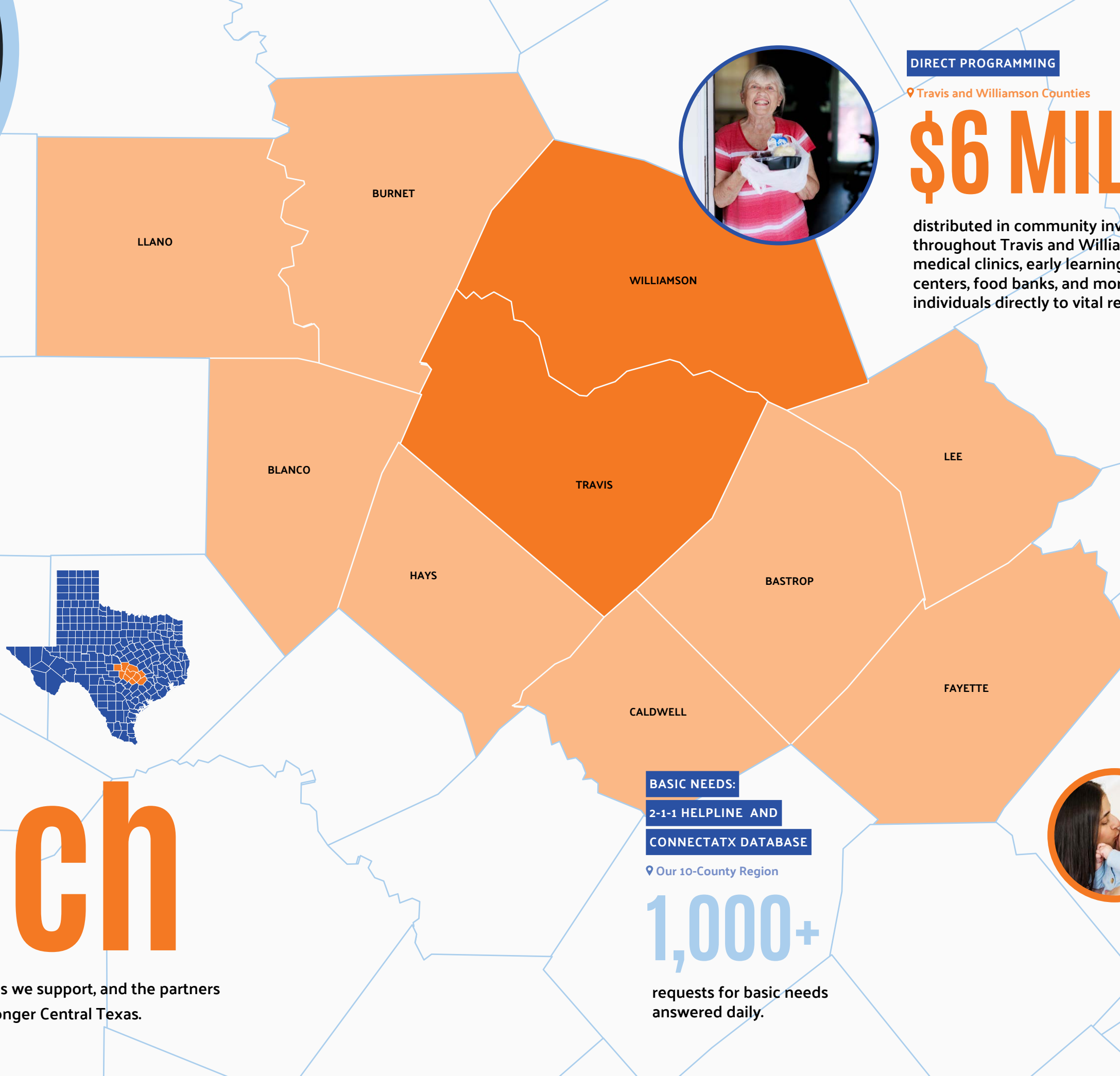
45,000

behavioral health requests answered last year, linking people to the right care.



Our Reach

The counties we serve, the coalitions we support, and the partners we activate together, building a stronger Central Texas.



DIRECT PROGRAMMING

📍 Travis and Williamson Counties

\$6 MILLION+

distributed in community investment grants and subgrants throughout Travis and Williamson counties to local medical clinics, early learning centers, community health centers, food banks, and more, helping connect local individuals directly to vital resources.

79

grants awarded to local organizations, helping them expand their reach, build sustainability, and create lasting change for families.

115,890

children and individuals connected to critical programs for stability and opportunity

150+

partner organizations –including nonprofits, schools, hospitals, and public agencies –came together to scale impact and meet families where they are.

2,047

pregnant and postpartum mothers connected to life-changing supports

5

coalitions with 2,000+ voices shaping early care and education, resources, and family stability.



**BASIC NEEDS:
2-1-1 HELPLINE AND
CONNECTATX DATABASE**

📍 Our 10-County Region

1,000+

requests for basic needs answered daily.

United for Impact

These corporations, foundations, and community champions fuel impact across Central Texas.

IMPACT \$1,000,000 +



MISSION \$500,000 +



CONNECT \$250,000 +



INSPIRE \$100,000 +



UNITE \$50,000 +



TRANSFORM \$25,000 +



THRIVE \$10,000 +



SUPPORT \$5,000 +



FRIEND \$1,000 +

ATX Defense

Austin Community College District

Austin PBS

Beacon Nonprofit Consulting

Broadway National Bank

Chisholm Trail Communities Foundation

DMC Law

Emerson Automation Solutions

Enterprise Holdings

GarzaEMC

Hahn Agency

Hope Austin

NXP

Page 33 Studio

Pink Cactus Productions

Power Home Remodeling

PROOF Advertising

Ryan Companies

Texas Gas

Celebrating Leadership, Fueling Change

Dynamic donor networks and signature events bring together community leaders to celebrate generosity, elevate voices, and fuel lasting change across Central Texas.



A Night United/Tocqueville United

Through our Tocqueville United Donor Network, we celebrate leaders who devote their time, talents, and resources to strengthening Central Texas – many of whom joined us on March 1 at A Night United, a sold-out evening where more than 400 community members welcomed new CEO Ingrid Taylor and celebrated our collective impact.

Gathering for Good/Women United

Women United harnesses the power and leadership of women to strengthen our community. This spirit was on full display at Gathering for Good on May 1, when more than 300 community members joined the annual luncheon celebrating women's many roles and collective strength.



Together with you

Your partnership turns volunteer hours, campaigns, and kit builds into lasting impact for thousands of Central Texans.



Workplace Campaigns

Hundreds of hard-working Central Texans came together to support local families and individuals through our workplace campaigns. H-E-B showed up in a big way: Partners from 58 stores across 10 counties raised more than \$1.4 million for our neighbors.

Days of Caring

Our annual Summer and Fall Days of Caring bring more than 150 volunteers together to roll up their sleeves and make a difference. From rebuilding an animal sanctuary to gardening at a child care center, it's just one way we mobilize our community to action.



Packed With Purpose

Corporate partners and donor network members built 7,000 kits filled with early learning tools, teacher appreciation gifts, hygiene essentials, healthy snacks, STEM activities, and more. Simple in design, each kit reminds teachers, young learners, unhoused neighbors, and others that they are supported.



One of 11 United Way kit builds this year, PayPal team members packed 1,770 kits for local students for their annual Impact Day.

COMMITTEE MEMBERS

Thank you to our committee members for joining our vision of a region where everyone has the opportunity to thrive.

Advocacy Committee

Allison Dwyer,
Community Advocate

Bobby Jenkins,
ABC Home &
Commercial Services

The Honorable Rudy Metayer, City of Pflugerville, Graves Dougherty Hearon & Moody

Dave Porter, Williamson County Economic Development Partnership

Yvette Ruiz,
JPMorgan Chase

Mark Strama,
The University of Texas at Austin

Finance Committee

Jennifer Poppe, Chair

Marie Baker, SBS Global

Craig Fegley,
JPMorgan Chase

Tracey Guidry Cooley,
Deloitte

Stacy Huntoon, PwC

Scott Rust, National Instruments

Donald Schwent,
Enterprise Holdings

Jeffrey Vernor,
Dimensional Fund Advisors, Inc.

Governance Committee

Kristin Marcum, Board Chair, ECPR Texas

Jennifer Poppe, Board Treasurer

Jeremiah Bentley,
Texas Mutual Insurance Company

Mollie Duckworth,
Latham & Watkins

Allison Dwyer,
Community Advocate

John Holmes,
Forcepoint LLC

Ed Latson,
Opportunity Austin

Michele J. Scott,
Square Move Realty

Mark Strama,
The University of Texas at Austin

Impact Committee

Allison Dwyer,
Community Advocate

Andy Esparza,
Community Advocate

Josh Childs,
The University of Texas at Austin

Saro Mohammad,
Ed Research Works

Dr. Aletha Huston,
The University of Texas at Austin

Becky Pastner,
Pastner Leadership LLC

Fred Tedesco,
KPMG - Retired

Dr. Raphael Travis,
Texas State University

Newton Wong, Deloitte

Kiyomi Beach,
Network of Intersectional Professions

Jennifer Hickerson,
Alfred Williams & Company

Resource Development Committee

Ed Latson, Chair,
Opportunity Austin

Blake Absher,
Broadway National Bank

Jeremiah Bentley,
Texas Mutual Insurance Company

Patty Bloom, Deloitte

Bre Brown,
JLL Austin Real Estate

Patrick Cantilo,
Cantilo & Bennett, LLP

Maria Cole,
Community Advocate

Tracy Fielder,
Community Volunteer

Michele Glaze, Samsung Austin Semiconductor

Hector Hernandez,
Truist Bank

John Holmes,
Forcepoint LLC

Michelle Long,
Independent Consultant

Kristin Marcum,
ECPR Texas

Monica Muñoz Andry,
Greater Austin Hispanic Chamber of Commerce

Marianne Rochelle,
Community Volunteer

Yvette Ruiz,
JPMorgan Chase

Arielle Sadler,
Texas Mutual Insurance Company

Lindsey Sanders,
Kirkland & Ellis LLP

Van Vo,
Community Volunteer

Alison Walgren,
Deloitte

Wilco Community Investment Council

Andrew Bennett,
Baylor Scott & White Healthcare System

Mark Brody,
Brohawk Solutions LLC

Maria Cole,
Community Advocate

Ana-Cristina González,
AC González Consulting, LLC

Cynthia Flores,
Annunciation Maternity Home Inc

Caroline Hilbert,
Williamson County & Cities Health District

Michelle Long,
Independent Consultant

Diana Maldonado,
Maldonado Strategies

Eustaquio Martinez,
University Federal Credit Union

Dave Porter, Williamson County Economic Development Partnership

Sharon Richardson,
Christen's Gourmet Pralines

Kristin Stevens,
City of Round Rock

Amin Salahuddin,
EIXSYS Healthcare System